



### REVISION HISTORY

<u>Revision</u>	<u>Description</u>	<u>Issue Date</u>
Rev. 1.0	Initial Issue	Aug.28.2005
Rev. 1.1	Revised $I_{SB1}$ LL/LLI-LLE(max)= 50/100 $\mu$ A => 20/50 $\mu$ A $I_{DR}$ LL/LLI-LLE(max)= 20/40 $\mu$ A => 12/30 $\mu$ A	Mar.30.2006
Rev. 1.2	Added SL Spec.	Nov.2.2007
Rev. 1.3	Revised typos in <b>FEATURES</b>	May.6.2008
Rev. 1.4	Revised $I_{SB1}/I_{DR(MAX)}$ Added $I_{SB1}/I_{DR}$ values when $T_A = 25^\circ\text{C}$ and $T_A = 40^\circ\text{C}$ Revised <b>FEATURES &amp; ORDERING INFORMATION</b> <b>Lead free and green package available to Green package available</b> Added packing type in <b>ORDERING INFORMATION</b> Revised $V_{TERM}$ to $V_{T1}$ and $V_{T2}$ Deleted $T_{SOLDER}$ in <b>ABSOLUTE MAXIMUM RATINGS</b>	Mar.30.2009
Rev. 1.5	Revised <b>PACKAGE OUTLINE DIMENSION</b> in page 10/11/12/13	May.7.2010
Rev. 1.6	Revised <b>ORDERING INFORMATION</b> in page 14	Aug.30.2010
Rev. 1.7	Deleted E Grade	Aug.9.2011
Rev. 1.8	Revised <b>PIN CONFIGURATION</b> in page 2	Apr.06.2012
Rev. 1.9	Correct <b>ORDERING INFORMATION</b> Typo. Added top view of BGA in <b>PIN CONFIGURATION</b> Deleted E Grade in <b>ORDERING INFORMATION</b>	May.20.2016
Rev. 1.10	Deleted <b>WRITE CYCLE</b> Notes : 1. WE#, CE# must be high or CE2 must be low during all address transitions in page 7	Jun.28.2016
Rev. 1.11	Revised <b>GENERAL DESCRIPTION</b> in page 1 Revised <b>32-pin TSOP I &amp; 36-ball TFBGA Package Outline Dimension</b>	Feb.06.2017
Rev. 1.12	Revised <b>ORDERING INFORMATION</b> in page 14 32 Pin(450mil) SOP PackingType : Tube→Tray	Aug.24.2023

### FEATURES

- Fast access time : 35/55/70ns
- Low power consumption:  
 Operating current : 12/10/7mA (TYP.)  
 Standby current : 1 $\mu$ A (TYP.) LL-version  
                           0.8 $\mu$ A (TYP.) SL-version
- Single 2.7V ~ 5.5V power supply
- All outputs TTL compatible
- Fully static operation
- Tri-state output
- Data retention voltage : 1.5V (MIN.)
- **Green package available**
- Package : 32-pin 450mil SOP  
                   32-pin 600mil PDIP  
                   32-pin 8mm x 20mm TSOP I  
                   32-pin 8mm x 13.4mm sTSOP  
                   36-ball 6mm x 8mm TFBGA

### GENERAL DESCRIPTION

The LY62W1024 is a 1,048,576-bit low power CMOS static random access memory organized as 131,072 words by 8 bits. It is fabricated using very high performance, high reliability CMOS technology. Its standby current is stable within the range of operating temperature.

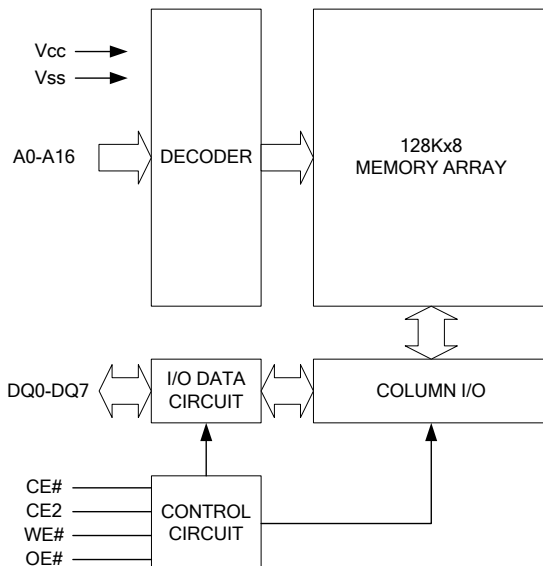
The LY62W1024 is well designed for very low power system applications, and particularly well suited for battery back-up nonvolatile memory application.

The LY62W1024 operates from a single power supply of 2.7V ~ 5.5V and all outputs are fully TTL compatible.

### PRODUCT FAMILY

Product Family	Operating Temperature	V <sub>CC</sub> Range	Speed	Power Dissipation	
				Standby(I <sub>SB1</sub> , TYP.)	Operating(I <sub>CC</sub> , TYP.)
LY62W1024	0 ~ 70°C	2.7 ~ 5.5V	35/55/70ns	1 $\mu$ A(LL)/0.8 $\mu$ A(SL)	12/10/7mA
LY62W1024(I)	-40 ~ 85°C	2.7 ~ 5.5V	35/55/70ns	1 $\mu$ A(LL)/0.8 $\mu$ A(SL)	12/10/7mA

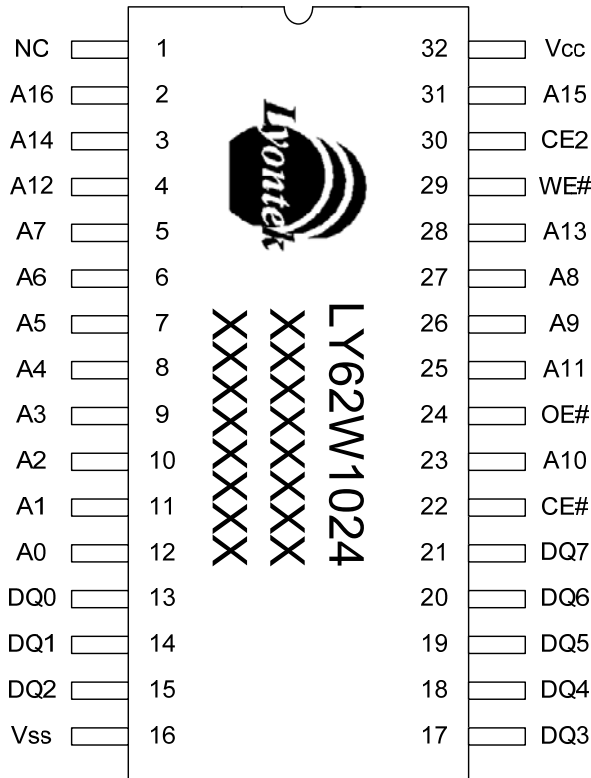
### FUNCTIONAL BLOCK DIAGRAM



### PIN DESCRIPTION

SYMBOL	DESCRIPTION
A0 - A16	Address Inputs
DQ0 - DQ7	Data Inputs/Outputs
CE#, CE2	Chip Enable Inputs
WE#	Write Enable Input
OE#	Output Enable Input
V <sub>CC</sub>	Power Supply
V <sub>SS</sub>	Ground
NC	No Connection

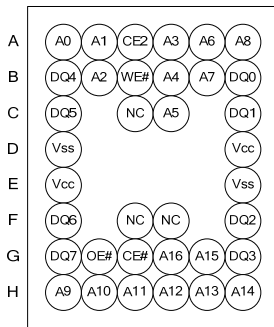
### PIN CONFIGURATION



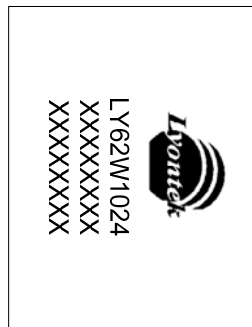
SOP / PDIP



TSOP I / sTSOP



TFBGA(See through with top view)



TFBGA(Top View)

PS: All pin out definition are relative with "Lyontek logo" orientation.



#### ABSOLUTE MAXIMUM RATINGS\*

PARAMETER	SYMBOL	RATING	UNIT
Voltage on V <sub>CC</sub> relative to V <sub>SS</sub>	V <sub>T1</sub>	-0.5 to 6.5	V
Voltage on any other pin relative to V <sub>SS</sub>	V <sub>T2</sub>	-0.5 to V <sub>CC</sub> +0.5	V
Operating Temperature	T <sub>A</sub>	0 to 70(C grade)	°C
		-40 to 85(I grade)	
Storage Temperature	T <sub>STG</sub>	-65 to 150	°C
Power Dissipation	P <sub>D</sub>	1	W
DC Output Current	I <sub>OUT</sub>	50	mA

\*Stresses greater than those listed under "Absolute Maximum Ratings" may cause permanent damage to the device. This is a stress rating only and functional operation of the device or any other conditions above those indicated in the operational sections of this specification is not implied. Exposure to the absolute maximum rating conditions for extended period may affect device reliability.

#### TRUTH TABLE

MODE	CE#	CE2	OE#	WE#	I/O OPERATION	SUPPLY CURRENT
Standby	H	X	X	X	High-Z	I <sub>SB1</sub>
	X	L	X	X	High-Z	I <sub>SB1</sub>
Output Disable	L	H	H	H	High-Z	I <sub>CC</sub> , I <sub>CC1</sub>
Read	L	H	L	H	D <sub>OUT</sub>	I <sub>CC</sub> , I <sub>CC1</sub>
Write	L	H	X	L	D <sub>IN</sub>	I <sub>CC</sub> , I <sub>CC1</sub>

Note: H = V<sub>IH</sub>, L = V<sub>IL</sub>, X = Don't care.



### DC ELECTRICAL CHARACTERISTICS

PARAMETER	SYMBOL	TEST CONDITION	MIN.	TYP. <sup>*4</sup>	MAX.	UNIT		
Supply Voltage	V <sub>CC</sub>		2.7	3.0	5.5	V		
Input High Voltage	V <sub>IH</sub> <sup>*1</sup>		0.7*V <sub>CC</sub>	-	V <sub>CC</sub> +0.3	V		
Input Low Voltage	V <sub>IL</sub> <sup>*2</sup>		- 0.2	-	0.6	V		
Input Leakage Current	I <sub>LI</sub>	V <sub>CC</sub> ≥ V <sub>IN</sub> ≥ V <sub>SS</sub>	- 1	-	1	μA		
Output Leakage Current	I <sub>LO</sub>	V <sub>CC</sub> ≥ V <sub>OUT</sub> ≥ V <sub>SS</sub> , Output Disabled	- 1	-	1	μA		
Output High Voltage	V <sub>OH</sub>	I <sub>OH</sub> = -1mA	2.4	2.7	-	V		
Output Low Voltage	V <sub>OL</sub>	I <sub>OL</sub> = 2mA	-	-	0.4	V		
Average Operating Power supply Current	I <sub>CC</sub>	Cycle time = MIN. CE# = V <sub>IL</sub> and CE2 = V <sub>IH</sub> , I <sub>I/O</sub> = 0mA Other pins at V <sub>IL</sub> or V <sub>IH</sub>	- 35	-	12	80	mA	
			- 55	-	10	60	mA	
			- 70	-	7	50	mA	
	I <sub>CC1</sub>	Cycle time = 1μs CE# = 0.2V and CE2 ≥ V <sub>CC</sub> -0.2V, I <sub>I/O</sub> = 0mA Other pins at 0.2V or V <sub>CC</sub> - 0.2V	-	1	10	mA		
Standby Power Supply Current	I <sub>SB1</sub>	CE# ≥ V <sub>CC</sub> -0.2V or CE2 ≤ 0.2V Others at 0.2V or V <sub>CC</sub> - 0.2V	LL	-	1	15	μA	
			LLI	-	1	30	μA	
			SL <sup>*5</sup>	25°C	-	0.8	2	μA
			SLI <sup>*5</sup>	40°C	-	1	2	μA
			SL	-	0.8	7	μA	
			SLI	-	0.8	10	μA	

**Notes:**

- V<sub>IH</sub>(max) = V<sub>CC</sub> + 3.0V for pulse width less than 10ns.
- V<sub>IL</sub>(min) = V<sub>SS</sub> - 3.0V for pulse width less than 10ns.
- Over/Undershoot specifications are characterized, not 100% tested.
- Typical values are included for reference only and are not guaranteed or tested.  
Typical values are measured at V<sub>CC</sub> = V<sub>CC</sub>(TYP.) and T<sub>A</sub> = 25°C
- This parameter is measured at V<sub>CC</sub> = 3.0V

**CAPACITANCE** ( $T_A = 25^\circ\text{C}$ ,  $f = 1.0\text{MHz}$ )

PARAMETER	SYMBOL	MIN.	MAX.	UNIT
Input Capacitance	$C_{IN}$	-	6	pF
Input/Output Capacitance	$C_{I/O}$	-	8	pF

Note : These parameters are guaranteed by device characterization, but not production tested.

**AC TEST CONDITIONS**

Input Pulse Levels	0.2V to $V_{CC} - 0.2V$
Input Rise and Fall Times	3ns
Input and Output Timing Reference Levels	1.5V
Output Load	$C_L = 50\text{pF} + 1\text{TTL}$ , $I_{OH}/I_{OL} = -1\text{mA}/2\text{mA}$

**AC ELECTRICAL CHARACTERISTICS****(1) READ CYCLE**

PARAMETER	SYM.	LY62W1024-35		LY62W1024-55		LY62W1024-70		UNIT
		MIN.	MAX.	MIN.	MAX.	MIN.	MAX.	
Read Cycle Time	$t_{RC}$	35	-	55	-	70	-	ns
Address Access Time	$t_{AA}$	-	35	-	55	-	70	ns
Chip Enable Access Time	$t_{ACE}$	-	35	-	55	-	70	ns
Output Enable Access Time	$t_{OE}$	-	25	-	30	-	35	ns
Chip Enable to Output in Low-Z	$t_{CLZ}^*$	10	-	10	-	10	-	ns
Output Enable to Output in Low-Z	$t_{OLZ}^*$	5	-	5	-	5	-	ns
Chip Disable to Output in High-Z	$t_{CHZ}^*$	-	15	-	20	-	25	ns
Output Disable to Output in High-Z	$t_{OHZ}^*$	-	15	-	20	-	25	ns
Output Hold from Address Change	$t_{OH}$	10	-	10	-	10	-	ns

**(2) WRITE CYCLE**

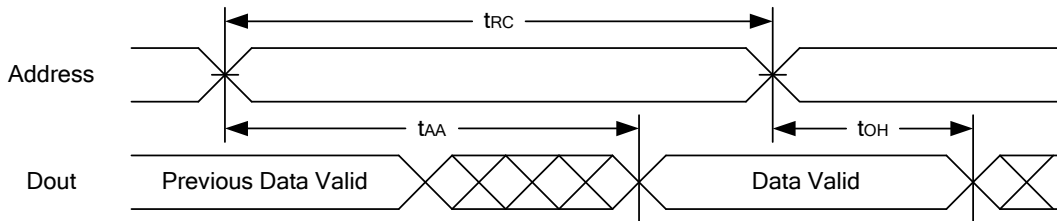
PARAMETER	SYM.	LY62W1024-35		LY62W1024-55		LY62W1024-70		UNIT
		MIN.	MAX.	MIN.	MAX.	MIN.	MAX.	
Write Cycle Time	$t_{WC}$	35	-	55	-	70	-	ns
Address Valid to End of Write	$t_{AW}$	30	-	50	-	60	-	ns
Chip Enable to End of Write	$t_{CW}$	30	-	50	-	60	-	ns
Address Set-up Time	$t_{AS}$	0	-	0	-	0	-	ns
Write Pulse Width	$t_{WP}$	25	-	45	-	55	-	ns
Write Recovery Time	$t_{WR}$	0	-	0	-	0	-	ns
Data to Write Time Overlap	$t_{DW}$	20	-	25	-	30	-	ns
Data Hold from End of Write Time	$t_{DH}$	0	-	0	-	0	-	ns
Output Active from End of Write	$t_{OW}^*$	5	-	5	-	5	-	ns
Write to Output in High-Z	$t_{WHZ}^*$	-	15	-	20	-	25	ns

\*These parameters are guaranteed by device characterization, but not production tested.

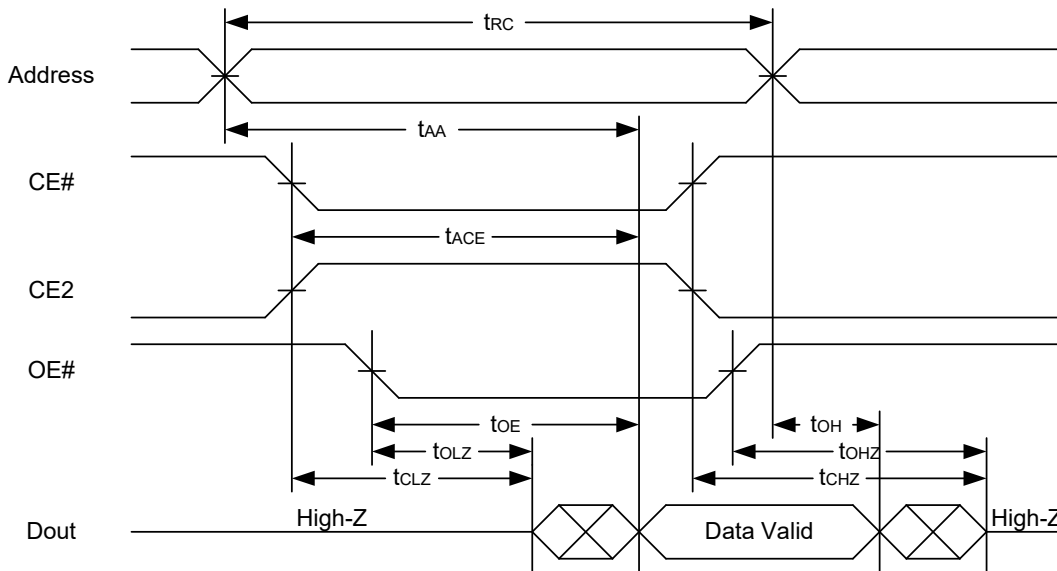


### TIMING WAVEFORMS

#### READ CYCLE 1 (Address Controlled) (1,2)



#### READ CYCLE 2 (CE# and CE2 and OE# Controlled) (1,3,4,5)

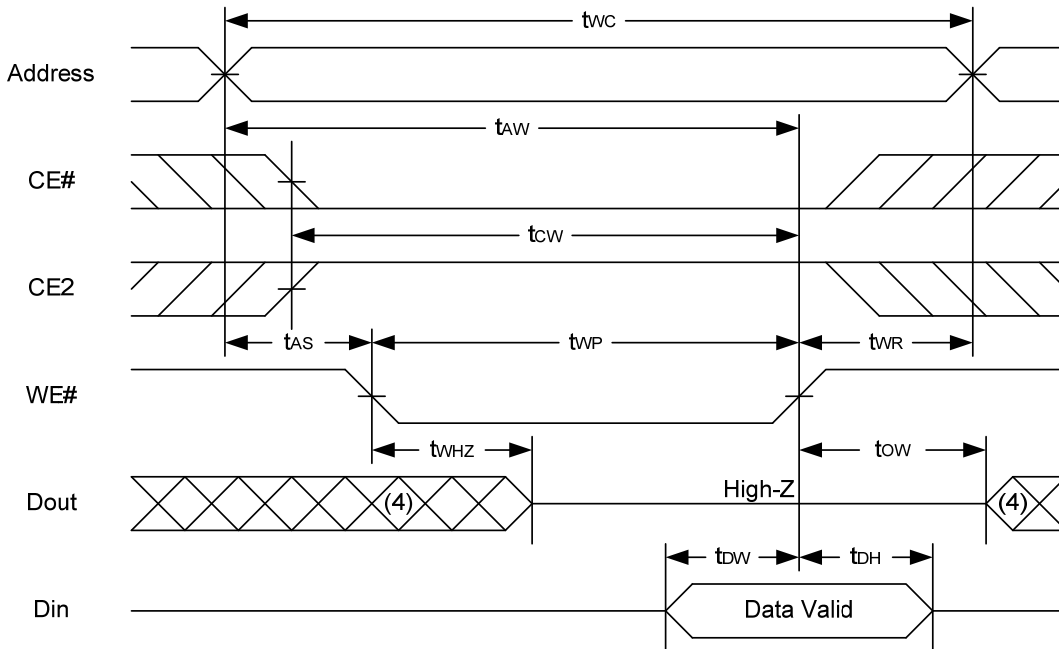


#### Notes :

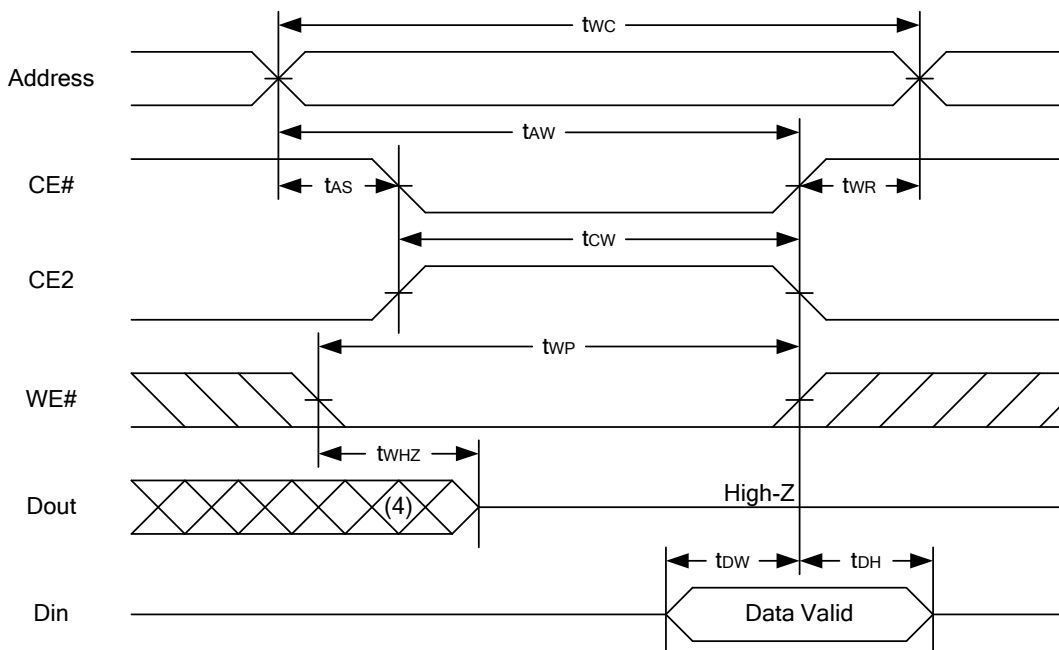
1. WE# is high for read cycle.
2. Device is continuously selected OE# = low, CE# = low, CE2 = high.
3. Address must be valid prior to or coincident with CE# = low, CE2 = high; otherwise  $t_{AA}$  is the limiting parameter.
4.  $t_{CLZ}$ ,  $t_{OLZ}$ ,  $t_{CHZ}$  and  $t_{OHZ}$  are specified with  $C_L = 5pF$ . Transition is measured  $\pm 500mV$  from steady state.
5. At any given temperature and voltage condition,  $t_{CHZ}$  is less than  $t_{CLZ}$ ,  $t_{OHZ}$  is less than  $t_{OLZ}$ .



#### WRITE CYCLE 1 (WE# Controlled) (1,2,4,5)



#### WRITE CYCLE 2 (CE# and CE2 Controlled) (1,4,5)



#### Notes :

1. A write occurs during the overlap of a low CE#, high CE2, low WE#.
2. During a WE# controlled write cycle with OE# low,  $t_{WP}$  must be greater than  $t_{WHZ} + t_{OW}$  to allow the drivers to turn off and data to be placed on the bus.
3. During this period, I/O pins are in the output state, and input signals must not be applied.
4. If the CE# low transition and CE2 high transition occurs simultaneously with or after WE# low transition, the outputs remain in a high impedance state.
5.  $t_{OW}$  and  $t_{WHZ}$  are specified with  $C_L = 5pF$ . Transition is measured  $\pm 500mV$  from steady state.

Lyontek Inc. reserves the rights to change the specifications and products without notice.

2F, No.17, Industry E. Rd. II, Science-Based Industrial Park, Hsinchu 300, Taiwan.

TEL: 886-3-6668838

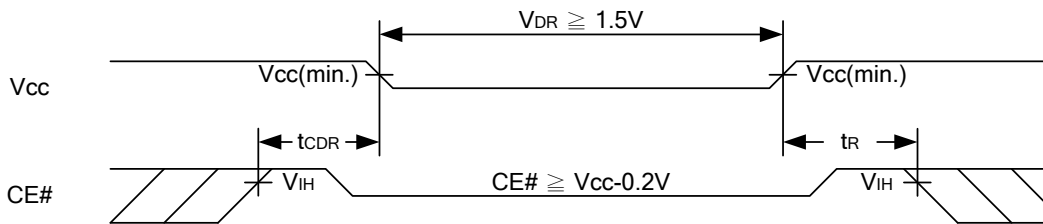
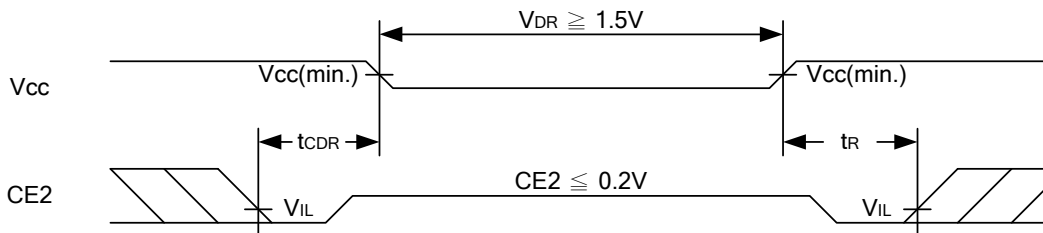
FAX: 886-3-6668836



**DATA RETENTION CHARACTERISTICS**

PARAMETER	SYMBOL	TEST CONDITION	MIN.	TYP.	MAX.	UNIT		
V <sub>CC</sub> for Data Retention	V <sub>DR</sub>	CE# ≥ V <sub>CC</sub> - 0.2V or CE2 ≤ 0.2V	1.5	-	5.5	V		
Data Retention Current	I <sub>DR</sub>	V <sub>CC</sub> = 1.5V CE# ≥ V <sub>CC</sub> - 0.2V or CE2 ≤ 0.2V Other pins at 0.2V or V <sub>CC</sub> -0.2V	LL	-	0.5	12	μA	
			LLI	-	0.5	30	μA	
			SL	25°C	-	0.4	2	μA
			SLI	40°C	-	0.5	2	μA
			SL	-	-	0.4	5	μA
			SLI	-	-	0.4	8	μA
Chip Disable to Data Retention Time	t <sub>CDR</sub>	See Data Retention Waveforms (below)	0	-	-	ns		
Recovery Time	t <sub>R</sub>		t <sub>RC</sub> *	-	-	ns		

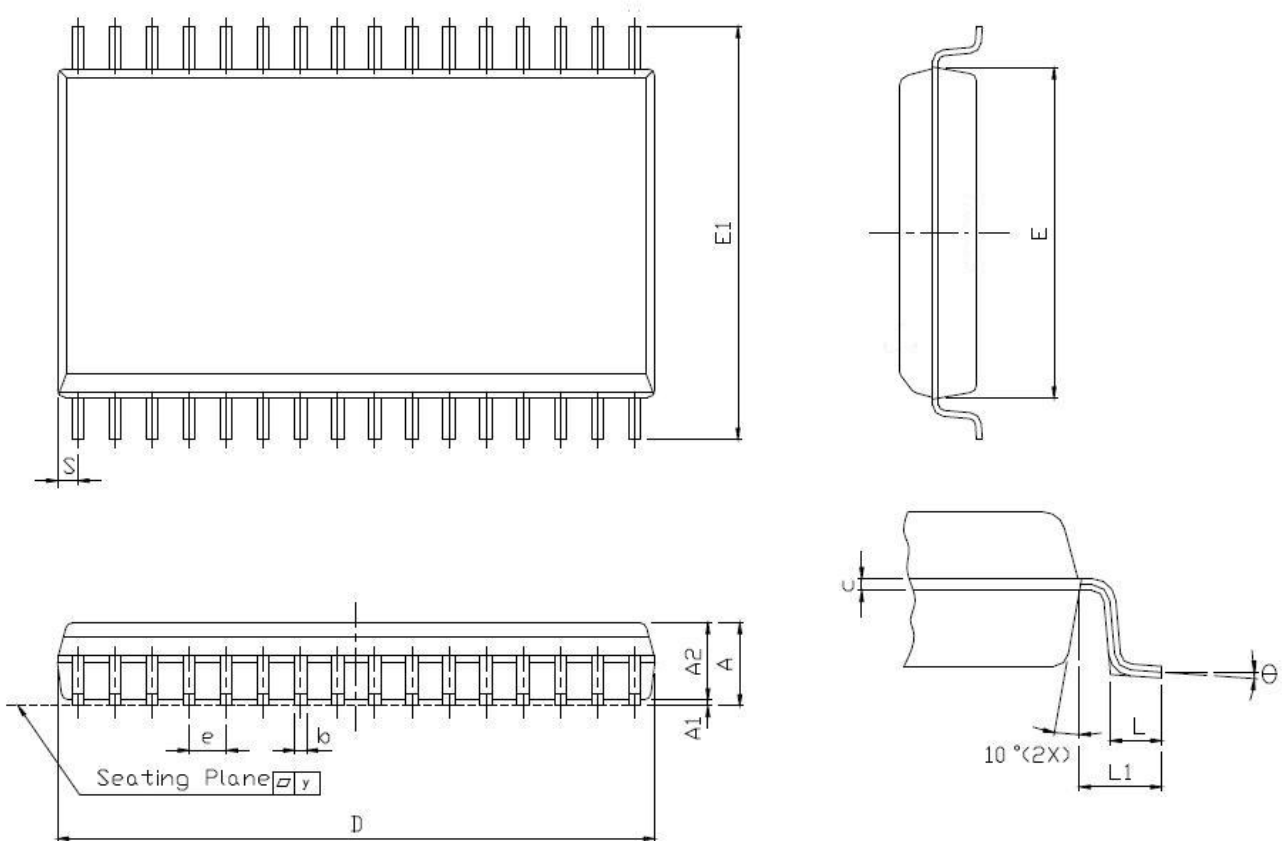
 t<sub>RC</sub>\* = Read Cycle Time

**DATA RETENTION WAVEFORM**
**Low V<sub>CC</sub> Data Retention Waveform (1) (CE# controlled)**

**Low V<sub>CC</sub> Data Retention Waveform (2) (CE2 controlled)**




**PACKAGE OUTLINE DIMENSION**

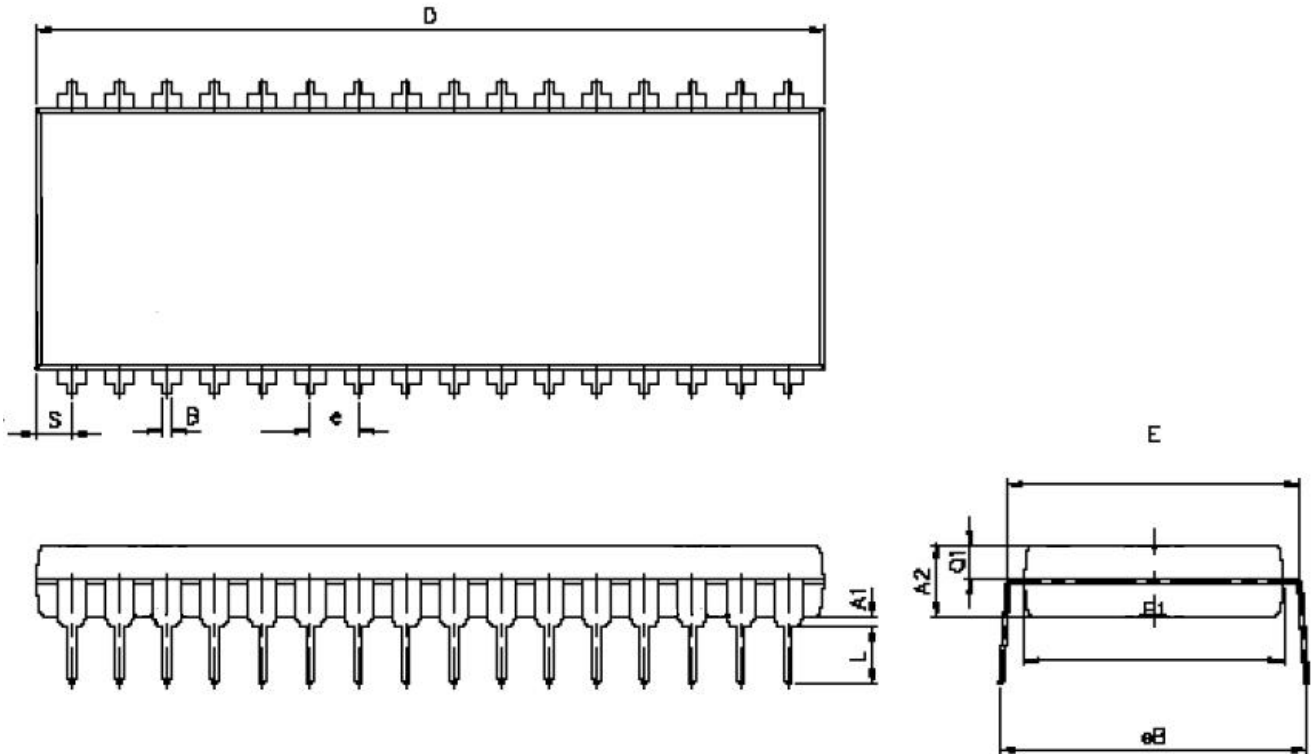
**32-pin 450 mil SOP Package Outline Dimension**



SYM.	UNIT	INCH.(BASE)	MM(REF)
A		0.120(MAX)	3.048(MAX)
A1		0.004(MIN)	0.102(MIN)
A2		0.116(MAX)	2.946(MAX)
b		0.016(TYP)	0.406(TYP)
c		0.008(TYP)	0.203(TYP)
D		0.817(MAX)	20.75(MAX)
E		0.445±0.006	11.303±0.152
E1		0.555±0.025	14.097±0.635
e		0.050(TYP)	1.270(TYP)
L		0.033±0.017	0.838±0.432
L1		0.055±0.008	1.397±0.203
S		0.026(MAX)	0.660(MAX)
y		0.004(MAX)	0.101(MAX)
θ		0° -10°	0° -10°



#### 32-pin 600 mil PDIP Package Outline Dimension

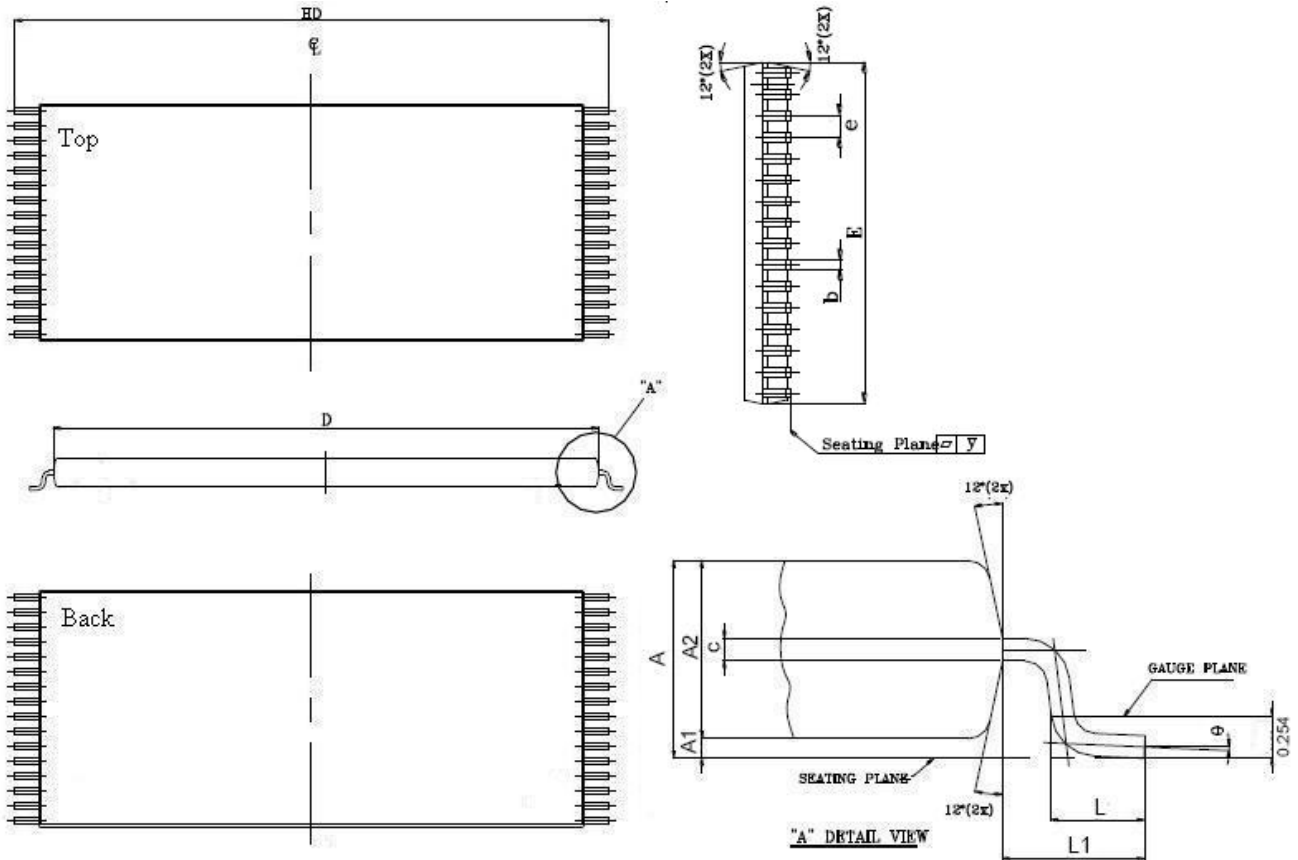


SYM. \ UNIT	INCH(BASE)	MM(REF)
A1	0.015(MIN)	0.381(MIN)
A2	0.155±0.005	3.937±0.127
B	0.018±0.005	0.457±0.127
D	1.650±0.01	41.910±0.254
E	0.600±0.010	15.240±0.254
E1	0.545±0.005	13.843±0.127
e	0.100(TYP)	2.540(TYP)
eB	0.650±0.020	16.510±0.508.
L	0.158±0.043	4.013±1.092
S	0.075±0.010	1.905±0.254
Q1	0.070±0.005	1.778±0.127

Note : D/E1/S dimension do not include mold flash.



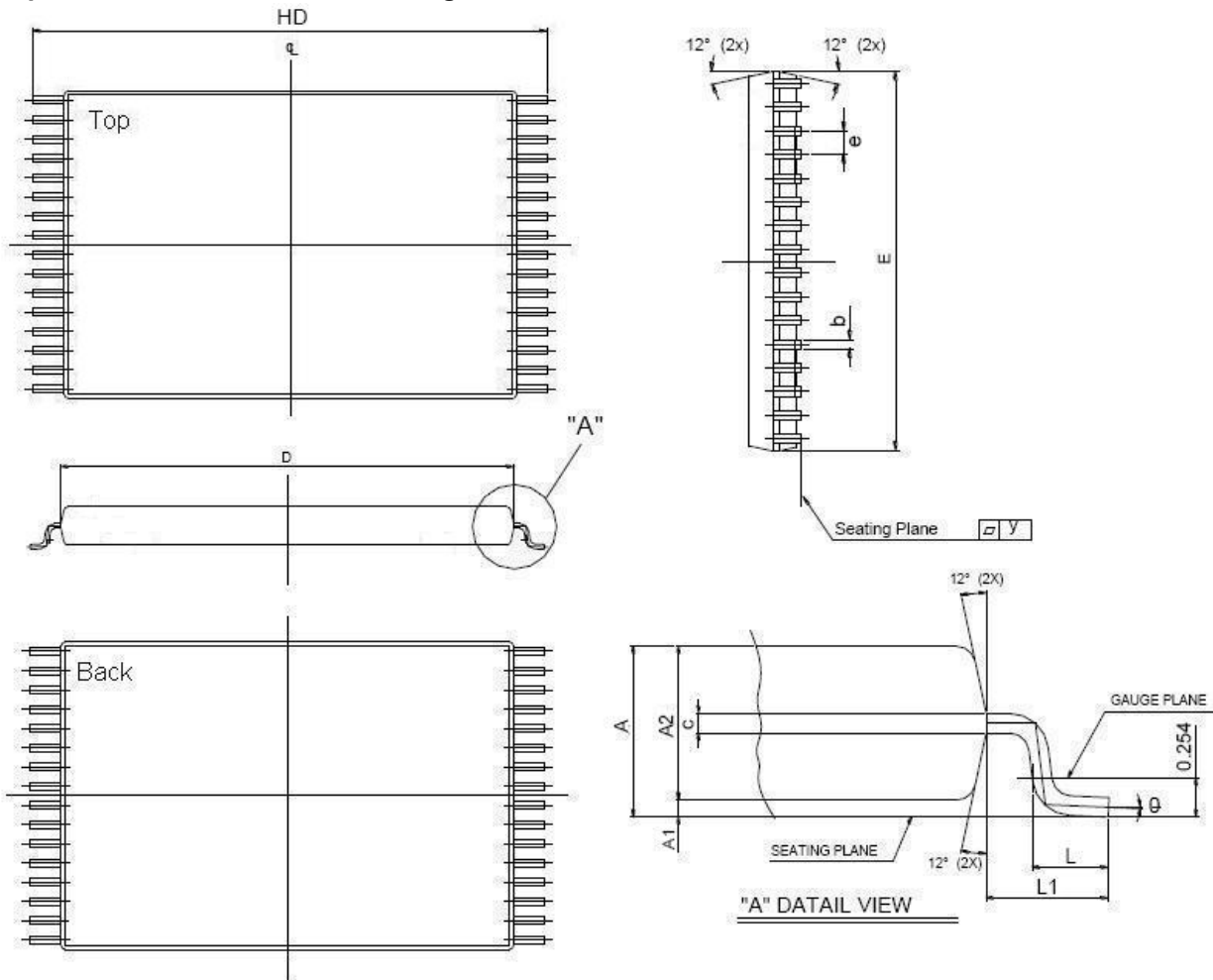
**32-pin 8mm x 20mm TSOP I Package Outline Dimension**



SYM.	UNIT	INCH(BASE)	MM(REF)
A		0.047 (MAX)	1.20 (MAX)
A1		0.004 ±0.002	0.10 ±0.05
A2		0.039 ±0.002	1.00 ±0.05
b		0.009 ±0.002	0.22 ±0.05
c		0.006 ±0.002	0.155 ±0.055
D		0.724 ±0.008	18.40 ±0.20
E		0.315 ±0.008	8.00 ±0.20
e		0.020 (TYP)	0.50 (TYP)
HD		0.787 ±0.008	20.00 ±0.20
L		0.024 ±0.004	0.60 ±0.10
L1		0.0315 ±0.004	0.08 ±0.10
y		0.003 (MAX)	0.08 (MAX)
θ		0°~5°	0°~5°



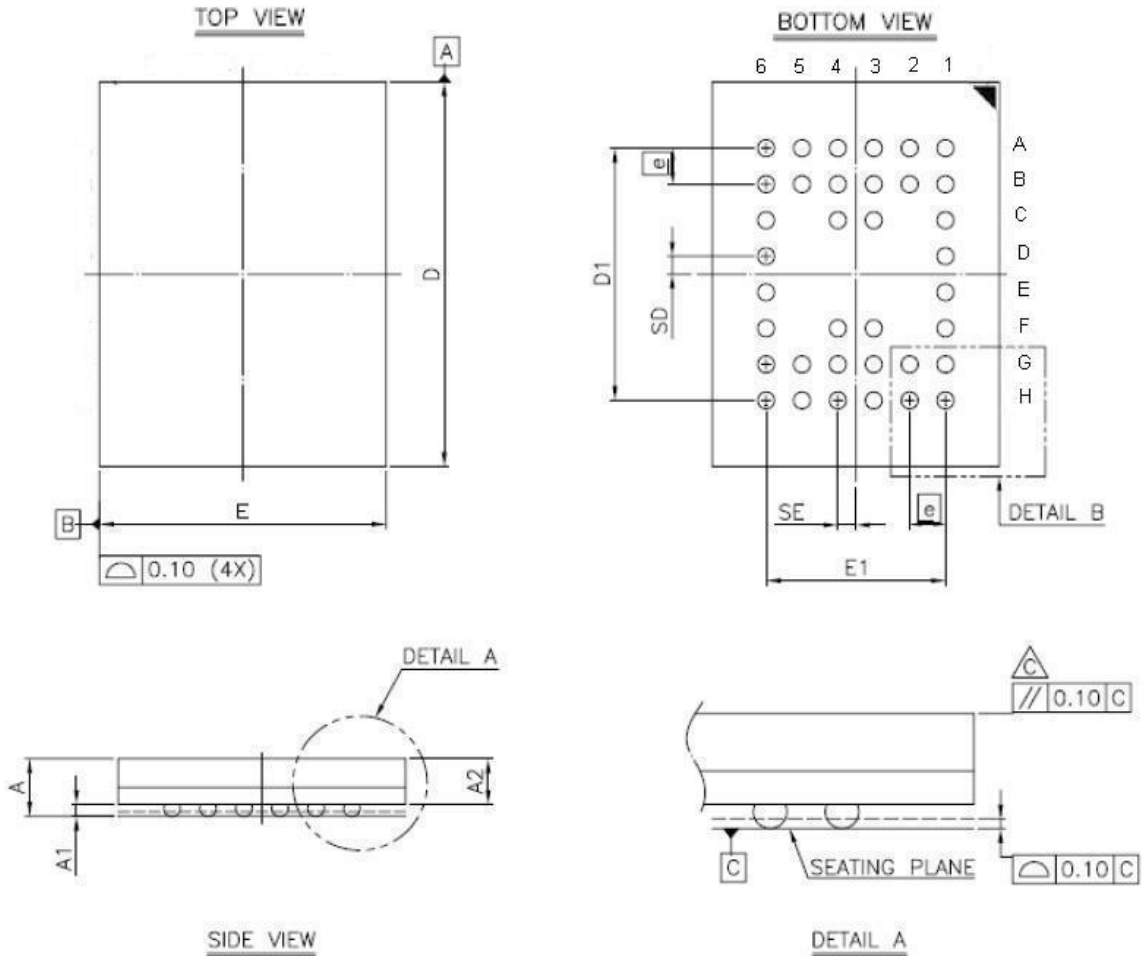
**32-pin 8mm x 13.4mm sTSOP Package Outline Dimension**



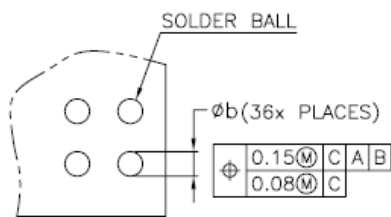
SYM.	UNIT	INCH(BASE)	MM(REF)
A		0.049 (MAX)	1.25 (MAX)
A1		0.004 ±0.002	0.10 ±0.05
A2		0.039 ±0.002	1.00 ±0.05
b		0.009 ±0.002	0.22 ±0.05
c		0.006 ±0.002	0.155 ±0.055
D		0.465 ±0.008	11.80 ±0.20
E		0.315 ±0.008	8.00 ±0.20
e		0.020 (TYP)	0.50 (TYP)
HD		0.528±0.008	13.40 ±0.20.
L		0.02 ±0.008	0.50 ±0.20
L1		0.031 ±0.005	0.8 ±0.125
y		0.003 (MAX)	0.076 (MAX)
Θ		0°~5°	0°~5°



#### 36-ball 6mm x 8mm TFBGA Package Outline Dimension



SYM.	DIMENSION (mm)			DIMENSION (inch)		
	MIN.	NOM.	MAX.	MIN.	NOM.	MAX.
A	—	—	1.20	—	—	0.047
A1	0.20	0.25	0.30	0.008	0.010	0.012
A2	—	—	0.94	—	—	0.037
b	0.30	0.35	0.40	0.012	0.014	0.016
D	7.95	8.00	8.05	0.313	0.315	0.317
D1	5.25 BSC			0.207 BSC		
E	5.95	6.00	6.05	0.234	0.236	0.238
E1	3.75 BSC			0.148 BSC		
SE	0.375 TYP			0.015 TYP		
SD	0.375 TYP			0.015 TYP		
e	0.75 BSC			0.030 BSC		



DETAIL B

NOTE:

1. CONTROLLING DIMENSION : MILLIMETER.
2. REFERENCE DOCUMENT : JEDEC MO-207.

**ORDERING INFORMATION**

Package Type	Access Time (Speed)(ns)	Power Type	Temperature Range(°C)	Packing Type	Lyontek Item No.
32-pin (450mil) SOP	35	Special Ultra Low Power	0°C ~ 70°C	Tray	LY62W1024SL-35SL
				Tape Reel	LY62W1024SL-35SLT
			-40°C ~ 85°C	Tray	LY62W1024SL-35SLI
				Tape Reel	LY62W1024SL-35SLIT
		Ultra Low Power	0°C ~ 70°C	Tray	LY62W1024SL-35LL
				Tape Reel	LY62W1024SL-35LLT
		-40°C ~ 85°C	Tray	LY62W1024SL-35LLI	
			Tape Reel	LY62W1024SL-35LLIT	
	55	Special Ultra Low Power	0°C ~ 70°C	Tray	LY62W1024SL-55SL
				Tape Reel	LY62W1024SL-55SLT
			-40°C ~ 85°C	Tray	LY62W1024SL-55SLI
				Tape Reel	LY62W1024SL-55SLIT
		Ultra Low Power	0°C ~ 70°C	Tray	LY62W1024SL-55LL
				Tape Reel	LY62W1024SL-55LLT
		-40°C ~ 85°C	Tray	LY62W1024SL-55LLI	
			Tape Reel	LY62W1024SL-55LLIT	
	70	Special Ultra Low Power	0°C ~ 70°C	Tray	LY62W1024SL-70SL
				Tape Reel	LY62W1024SL-70SLT
			-40°C ~ 85°C	Tray	LY62W1024SL-70SLI
				Tape Reel	LY62W1024SL-70SLIT
		Ultra Low Power	0°C ~ 70°C	Tray	LY62W1024SL-70LL
				Tape Reel	LY62W1024SL-70LLT
		-40°C ~ 85°C	Tray	LY62W1024SL-70LLI	
			Tape Reel	LY62W1024SL-70LLIT	



#### ORDERING INFORMATION

Package Type	Access Time (Speed)(ns)	Power Type	Temperature Range(°C)	Packing Type	Lyontek Item No.
32-pin (600mil) PDIP	35	Special	0°C ~ 70°C	Tube	LY62W1024PL-35SL
		Ultra Low Power	-40°C ~ 85°C	Tube	LY62W1024PL-35SLI
		Ultra Low Power	0°C ~ 70°C	Tube	LY62W1024PL-35LL
			-40°C ~ 85°C	Tube	LY62W1024PL-35LLI
	55	Special	0°C ~ 70°C	Tube	LY62W1024PL-55SL
		Ultra Low Power	-40°C ~ 85°C	Tube	LY62W1024PL-55SLI
		Ultra Low Power	0°C ~ 70°C	Tube	LY62W1024PL-55LL
			-40°C ~ 85°C	Tube	LY62W1024PL-55LLI
	70	Special	0°C ~ 70°C	Tube	LY62W1024PL-70SL
		Ultra Low Power	-40°C ~ 85°C	Tube	LY62W1024PL-70SLI
		Ultra Low Power	0°C ~ 70°C	Tube	LY62W1024PL-70LL
			-40°C ~ 85°C	Tube	LY62W1024PL-70LLI





**ORDERING INFORMATION**

Package Type	Access Time (Speed)(ns)	Power Type	Temperature Range(°C)	Packing Type	Lyontek Item No.
32-pin (8mm x 20mm) TSOP I	35	Special Ultra Low Power	0°C ~ 70°C	Tray	LY62W1024LL-35SL
				Tape Reel	LY62W1024LL-35SLT
			-40°C ~ 85°C	Tray	LY62W1024LL-35SLI
				Tape Reel	LY62W1024LL-35SLIT
		Ultra Low Power	0°C ~ 70°C	Tray	LY62W1024LL-35LL
				Tape Reel	LY62W1024LL-35LLT
		-40°C ~ 85°C	Tray	LY62W1024LL-35LLI	
			Tape Reel	LY62W1024LL-35LLIT	
	55	Special Ultra Low Power	0°C ~ 70°C	Tray	LY62W1024LL-55SL
				Tape Reel	LY62W1024LL-55SLT
			-40°C ~ 85°C	Tray	LY62W1024LL-55SLI
				Tape Reel	LY62W1024LL-55SLIT
		Ultra Low Power	0°C ~ 70°C	Tray	LY62W1024LL-55LL
				Tape Reel	LY62W1024LL-55LLT
		-40°C ~ 85°C	Tray	LY62W1024LL-55LLI	
			Tape Reel	LY62W1024LL-55LLIT	
	70	Special Ultra Low Power	0°C ~ 70°C	Tray	LY62W1024LL-70SL
				Tape Reel	LY62W1024LL-70SLT
		-40°C ~ 85°C	Tray	LY62W1024LL-70SLI	
			Tape Reel	LY62W1024LL-70SLIT	
Ultra Low Power		0°C ~ 70°C	Tray	LY62W1024LL-70LL	
			Tape Reel	LY62W1024LL-70LLT	
	-40°C ~ 85°C	Tray	LY62W1024LL-70LLI		
		Tape Reel	LY62W1024LL-70LLIT		



#### ORDERING INFORMATION

Package Type	Access Time (Speed)(ns)	Power Type	Temperature Range(°C)	Packing Type	Lyontek Item No.	
32-pin (8mm x 13.4mm) sTSOP	35	Special Ultra Low Power	0°C ~ 70°C	Tray	LY62W1024RL-35SL	
				Tape Reel	LY62W1024RL-35SLT	
			-40°C ~ 85°C	Tray	LY62W1024RL-35SLI	
				Tape Reel	LY62W1024RL-35SLIT	
		Ultra Low Power	0°C ~ 70°C	Tray	LY62W1024RL-35LL	
				Tape Reel	LY62W1024RL-35LLT	
			-40°C ~ 85°C	Tray	LY62W1024RL-35LLI	
				Tape Reel	LY62W1024RL-35LLIT	
		55	Special Ultra Low Power	0°C ~ 70°C	Tray	LY62W1024RL-55SL
					Tape Reel	LY62W1024RL-55SLT
				-40°C ~ 85°C	Tray	LY62W1024RL-55SLI
					Tape Reel	LY62W1024RL-55SLIT
	Ultra Low Power		0°C ~ 70°C	Tray	LY62W1024RL-55LL	
				Tape Reel	LY62W1024RL-55LLT	
			-40°C ~ 85°C	Tray	LY62W1024RL-55LLI	
				Tape Reel	LY62W1024RL-55LLIT	
	70		Special Ultra Low Power	0°C ~ 70°C	Tray	LY62W1024RL-70SL
					Tape Reel	LY62W1024RL-70SLT
				-40°C ~ 85°C	Tray	LY62W1024RL-70SLI
					Tape Reel	LY62W1024RL-70SLIT
		Ultra Low Power	0°C ~ 70°C	Tray	LY62W1024RL-70LL	
				Tape Reel	LY62W1024RL-70LLT	
			-40°C ~ 85°C	Tray	LY62W1024RL-70LLI	
				Tape Reel	LY62W1024RL-70LLIT	



#### ORDERING INFORMATION

Package Type	Access Time (Speed)(ns)	Power Type	Temperature Range(°C)	Packing Type	Lyontek Item No.	
36-ball (6mm x 8mm) TFBGA	35	Special Ultra Low Power	0°C ~ 70°C	Tray	LY62W1024GL-35SL	
				Tape Reel	LY62W1024GL-35SLT	
			-40°C ~ 85°C	Tray	LY62W1024GL-35SLI	
				Tape Reel	LY62W1024GL-35SLIT	
			Ultra Low Power	0°C ~ 70°C	Tray	LY62W1024GL-35LL
					Tape Reel	LY62W1024GL-35LLT
		-40°C ~ 85°C		Tray	LY62W1024GL-35LLI	
				Tape Reel	LY62W1024GL-35LLIT	
		55	Special Ultra Low Power	0°C ~ 70°C	Tray	LY62W1024GL-55SL
					Tape Reel	LY62W1024GL-55SLT
				-40°C ~ 85°C	Tray	LY62W1024GL-55SLI
					Tape Reel	LY62W1024GL-55SLIT
	Ultra Low Power			0°C ~ 70°C	Tray	LY62W1024GL-55LL
					Tape Reel	LY62W1024GL-55LLT
			-40°C ~ 85°C	Tray	LY62W1024GL-55LLI	
				Tape Reel	LY62W1024GL-55LLIT	
	70		Special Ultra Low Power	0°C ~ 70°C	Tray	LY62W1024GL-70SL
					Tape Reel	LY62W1024GL-70SLT
				-40°C ~ 85°C	Tray	LY62W1024GL-70SLI
					Tape Reel	LY62W1024GL-70SLIT
		Ultra Low Power		0°C ~ 70°C	Tray	LY62W1024GL-70LL
					Tape Reel	LY62W1024GL-70LLT
			-40°C ~ 85°C	Tray	LY62W1024GL-70LLI	
				Tape Reel	LY62W1024GL-70LLIT	



**Lyontek Inc.**

**LY62W1024**

Rev. 1.12

**128K X 8 BIT LOW POWER CMOS SRAM**

---

THIS PAGE IS LEFT BLANK INTENTIONALLY.